

Notes on the Buprestid Genus *Neosambus* (Coleoptera, Buprestidae)

Masao TÔYAMA

4-16, Koshien 6, Nishinomiya, Hyogo, 633 Japan

Abstract *Neosambus cupricollis* FISHER, 1921, *N. ornatus* FISHER, 1921, *N. viridipennis* FISHER, 1921, *N. glabrus* FISHER, 1921, and *N. cyaneus* FISHER, 1922, are transferred to the genus *Nalanda* THÉRY, 1904. *Neosambus papuanus* OBENBERGER, 1924, is transferred to the genus *Sambus* DEYROLLE, 1864. A new name, *Nalanda kurosawai* nom. nov. is proposed for *Nalanda cupricollis* (FISHER, 1921).

The buprestid genus *Neosambus* FISHER, 1921, was established on the basis of four new species from the Philippines, and *N. cupricollis* FISHER, 1921, was originally designated as the type species. Another species, *N. cyaneus*, was described from the Philippines by FISHER in 1922. On the other hand, the genus *Brachycisseis* THÉRY, 1931, was established on the basis of two new species, *B. dohertyi* and *B. rhodei*, both from New Guinea, and the former was designated as the type species. The genus *Brachycisseis* was, however, regarded as a synonym of the genus *Cisseoides* KERREMANS, 1893, and *B. dohertyi* was transferred to that genus by OBENBERGER in 1931. On the other hand, *B. rhodei* was regarded as a synonym of *Neosambus papuanus* OBENBERGER, 1924, at the same time.

In 1970, *Neosambus* was regarded by Y. KUROSAWA as a synonym of the genus *Nalanda* THÉRY, 1904, though no further comment was given on the classification of the species placed by OBENBERGER, in the genus *Neosambus*. Through the courtesy of Dr. Svatopluk BÍLÝ of the National Museum, Prague, and Professor Masataka SATÔ of Nagoya Womens' University, I was able to examine the type specimen of *Neosambus papuanus* OBENBERGER, 1924, and photographs of FISHER's type specimens, respectively. After my study on these materials and descriptions, it became apparent that all the species described by FISHER should be classified into the genus *Nalanda* THÉRY, 1904, and that *Neosambus papuanus* OBENBERGER must be transferred to the genus *Sambus* H. DEYROLLE, 1864.

Before going further, I wish to express my sincere gratitude to Dr. Yoshihiko KUROSAWA of the National Science Museum (Nat. Hist.), Tokyo, for his constant guidance, and to Dr. Shun-Ichi UÉNO of the same museum for his critical reading of the original manuscript. I am also indebted to Dr. Svatopluk BÍLÝ of the National Museum of Natural History, Prague, and Professor Masataka SATÔ of Nagoya Womens' University for their kind help during the course of this study.

Genus *Nalanda* THÉRY, 1904

Nalanda THÉRY, 1904, Ann. Soc. ent. Belg., **48**: 160. Type species: *Nalanda horni* THÉRY, 1904 (monotypy).

Neosambus FISHER, 1921, Philip. J. Sci., **18**: 351. Type species: *Neosambus cupricollis* FISHER, 1921 (original designation).

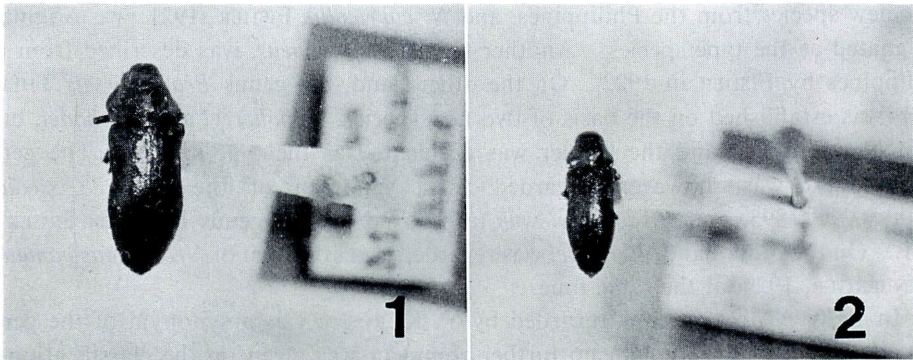
Five species belonging to the genus *Neosambus* were described by FISHER, from the Philippines. Judging from the original descriptions and photographs of the type specimens, however, they are apparently classified into the genus *Nalanda* THÉRY, 1904, as follows.

Nalanda kurosawai comb. et nom. nov. (Fig. 1)

Neosambus cupricollis FISHER, 1921, Philip. J. Sci., **18**: 352–353 (nec SAUNDERS, 1866, Trans. ent. Soc. Lond., (3), **5**: 314).

Nalanda ornatus (FISHER, 1921), comb. nov.

Neosambus ornatus FISHER, 1921, Philip. J. Sci., **18**: 353–354.



Figs. 1–2. *Nalanda* spp. — 1, *Nalanda kurosawai* comb. et nom. nov. (type); 2, *Nalanda viridipennis* (FISHER, 1921), comb. nov. (type).

Nalanda viridipennis (FISHER, 1921), comb. nov. (Fig. 2)

Neosambus viridipennis FISHER, 1921, Philip. J. Sci., **18**: 354–355.

Nalanda glaber (FISHER, 1921), comb. nov.

Neosambus glabrus FISHER, 1921, Philip. J. Sci., **18**: 355.

Nalanda cyaneus (FISHER, 1922), comb. nov.

Neosambus cyaneus FISHER, 1922, Proc. U. S. natn. Mus., **61** (7): 16–17.

Genus *Sambus* H. DEYROLLE, 1864

Sambus H. DEYROLLE, 1864. Ann. Soc. ent. Belg., **8**: 210–211. Type species: *Sambus lafertei* H. DEYROLLE, 1864 (present designation).

Many Oriental and African species are included in the present genus. They are very variable in the structure of prosternum; some of them bear distinct longitudinal

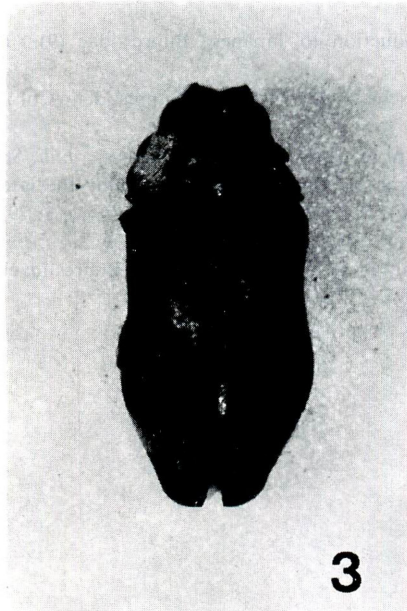


Fig. 3. *Sambus papuanus* (OBENBERGER, 1924), comb. nov. (type).

depressions along the sides of prosternum, while some are lacking in such depressions. *Neosambus papuanus* OBENBERGER, 1924, bears distinct depressions along the sides, but they do not form antennal grooves as seen in the genus *Nalanda*. Judging from this and other characteristics, the species must be classified into the genus *Sambus* DEYROLLE, 1864.

Sambus papuanus (OBENBERGER, 1924), comb. nov. (Fig. 3)
Neosambus papuanus OBENBERGER, 1924, Arch. Naturg., (A), **90** (3): 103.
Brachyctis rhodei THÉRY, 1931, Bull. Soc. ent. Fr., **1931**: 28–29.

摘 要

タマムシ科に属する *Neosambus* 属は、黒沢 (1970) によって *Nalanda* 属のシノニムとされたが、本属に含まれていた 6 種の所属についてはいまだに決定がなされていなかった。本文ではこの 6 種のうち、フィリピン産の 5 種を *Nalanda* 属に、ニューギニア産の 1 種を *Sambus* 属に移し、この処置によって新たにホモニムとなった *Nalanda* 属の 1 種に対して代置名を与えた。

References

- DEYROLLE, H., 1864. Description des Buprestides de la Malaisie recueillis par M. WALLACE. *Ann. Soc. ent. Belg.*, **8**: 1–312, pls. 1–4.
 FISHER, W. S., 1921. New Coleoptera from the Philippine Islands, family Buprestidae, tribe Agrilini. *Philip. J. Sci.*, **18**: 349–447.
 ——— 1922. New buprestid beetles from Borneo and the Philippine Islands. *Proc. U. S. natn.*

- Mus.*, **61** (7): 1-18.
- KUROSAWA, Y., 1970. Introduction to Japanese Buprestidae (9). *Coleopt. News*, (11): 1-4. (In Japanese.)
- OBENBERGER, J., 1924. Kritische Studien über die Buprestiden (Col.). *Arch. Naturg.*, (A), **90** (3): 1-171.
- 1931. Note concernant le genre *Brachycisseis* THÉRY. *Bull. Soc. ent. Fr.*, **1931**: 90-91.
- SAUNDERS, E., 1866. Catalogue of Buprestidae collected by the late M. MOUHOT, in Siam, &c., with descriptions of new species. *Trans. ent. Soc. Lond.*, (3), **5**: 297-322, 1 pl.
- THÉRY, A., 1904. Buprestides récoltés par le Dr. HORN à Ceylan. *Ann. Soc. ent. Belg.*, **48**: 158-167.
- 1931. Description du genre *Brachycisseis* [Col. Buprestidae]. *Bull. Soc. ent. Fr.*, **1931**: 26-29.